

PUBLIC NOTICE

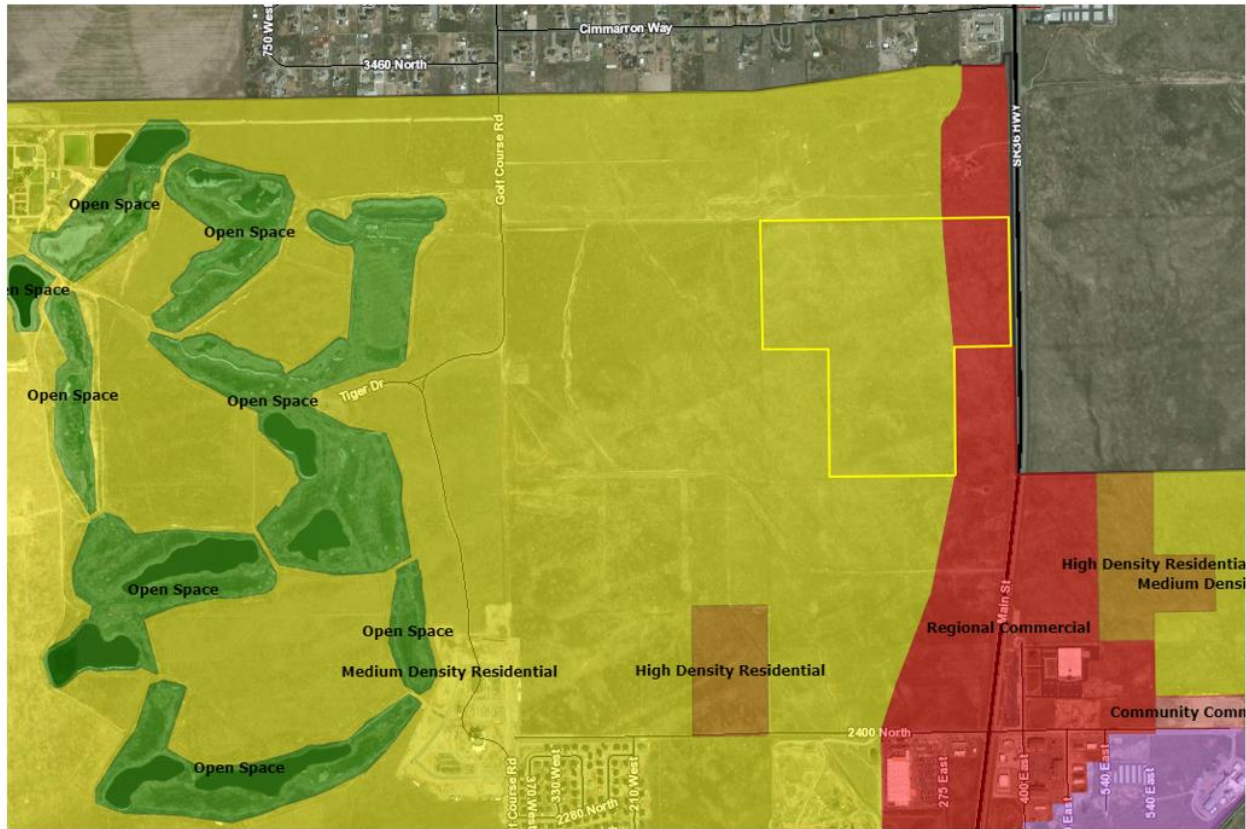
NOTICE IS HERBY GIVEN THAT the Tooele Planning Commission will hold a public hearing during their business meeting scheduled for **Wednesday, May 8, 2024 at 7:00 p.m.** in the City Council Chambers of City Hall located at 90 North Main Street, Tooele, Utah. The Complete public notice is posted on the Utah Public Notice Website www.utah.gov, the Tooele City Website www.tooelecity.gov, and at Tooele City Hall in Suite 227. To request a copy of the public notice for additional inquiries please contact the City Planner, Jared Hall, at (435) 843-2132 or jaredh@tooele.city.gov.

Public Hearing to consider a request by Perry Homes Inc. to amend the General Plan's Land Use Map designation of a 43.7-acre portion of the 117-acre property located at approximately 55 West and 3100 North from Medium Density Residential and Regional Commercial to High Density Residential.

We encourage anyone interested to join the Planning Commission meeting electronically through Tooele City's YouTube channel by logging onto www.youtube.com and searching Tooele City. If you would like to submit a comment for any public hearing item you may email pcpubliccomment@tooelecity.gov any time after the advertisement of this agenda and before the close of the hearing for that item during the meeting. Emails will only be read for public hearing items at the designated points in the meeting. Public comment is not accepted for public hearings from the broadcast feed. We encourage you to look for the published agenda for this meeting on the City's website, www.tooelecity.gov. Finalized agendas are typically published on the Friday prior to the meeting.

**** Notice – Tooele City is no longer broadcasting meetings via Facebook Live ****

Pursuant to the Americans with Disabilities Act, individuals needing special accommodation should notify Jared Hall, City Planner / Zoning Administrator at (435) 843-2132 or TDD (435) 843-2180 prior to the meeting.



- Community Commercial
- High Density Residential
- Industrial
- Light Industrial
- Low Density Residential
- Medium Density Residential
- Mixed Use
- Open Space
- Overlake Planned District
- Regional Commercial
- Rural Residential