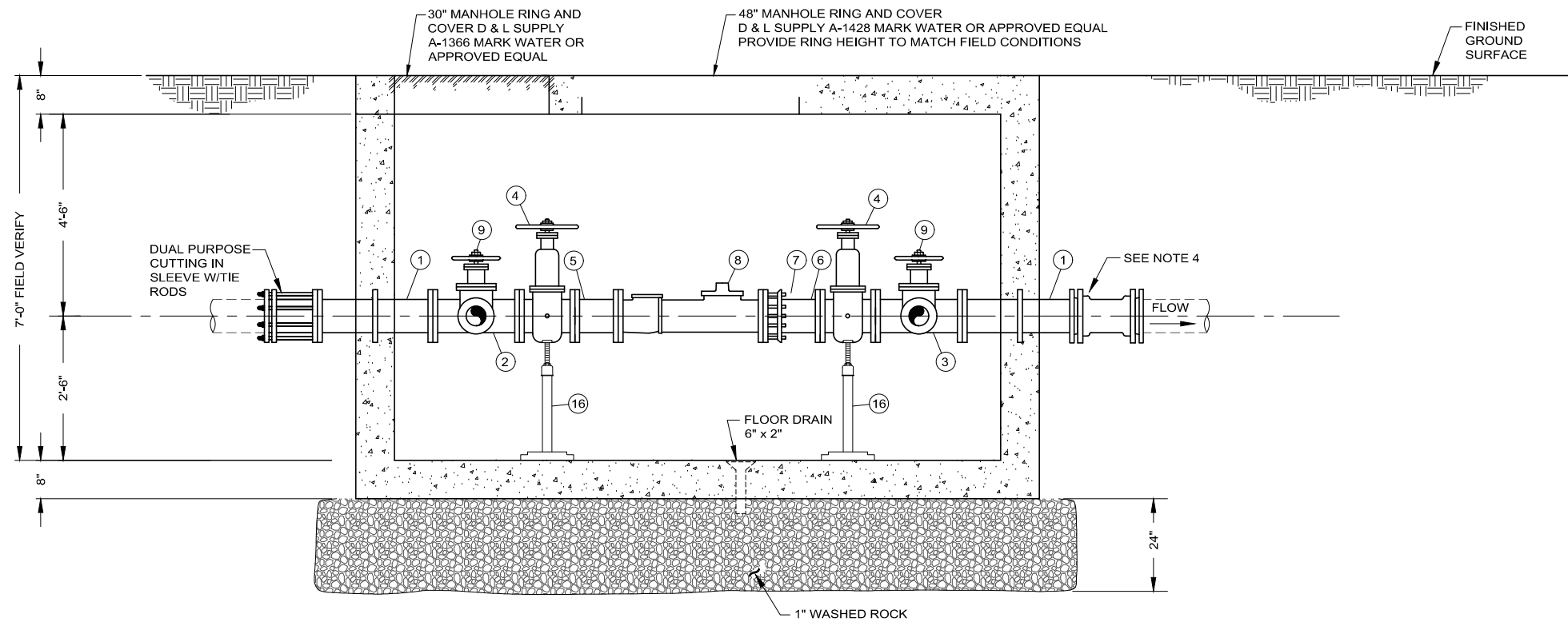


**8" METER STATION PLAN**  
NOT TO SCALE

PRESSURE REDUCING STATION VALVE AND FITTING SCHEDULE			
NO.	DESCRIPTION	SIZE	JOINT
1.	WALL PIPE W/THRUST RING	8" X 2'-0"	FLG
2.	TEE	8"	FLG
3.	BLIND FLANGE W/2" TAP	8"	FLG
4.	GATE VALVE (SEE TABLE NOTES)	8"	FLG
5.	SPOOL PIECE	8"	FLG
6.	NIPPLE	8"	FL X PE
7.	FLANGE COUPLING ADAPTER W/TIE RODS	8"	FL X PE
8.	COMPOUND METER (SENSUS OMNI C) 2	8"	FLG
9.	GATE VALVE (BRONZE)	2"	THD
10.	BRASS PIPE	2"	THD
11.	BRASS 90° ELBOW	2"	THD
12.	BRASS UNION	2"	THD
13.	CHECK VALVE	2"	THD
14.	FORD METER FLANGE	2"	
15.	COMPOUND METER (SENSUS OMNI C <sup>2</sup> )	2"	FLG
16.	PIPE SUPPORT (GRINNELL MODEL NO. 264)	-	-
17.	FLOOR DRAIN	6" X 2"	-
18.	WALL PIPE W/THRUST RING	8" X 2'-0"	FLG
19.	-	-	-

UNLESS OTHERWISE SPECIFIED, ALL PIPE AND FITTINGS ARE DIP CLASS 53.  
ALL FLANGES ARE ANSI CLASS 125.  
PROVIDE MEGALUG RESTRAINT ON ALL MJ FITTINGS.  
PROVIDE BRONZE OR STAINLESS STEEL BOLTS FOR ALL CONNECTIONS WITHIN VAULT.



**SECTION 1**  
NOT TO SCALE

**NOTES:**

1. ALL PIPE ABOVE GROUND TO BE GALVANIZED STEEL.
2. DIMENSIONS SHOWN ARE FOR INFORMATIONAL PURPOSES ONLY. H-20 MIN. LOADING REQUIRED. PROVIDE SHOP DRAWINGS FOR ENGINEERS APPROVAL PRIOR TO CONSTRUCTION.
3. PROVIDE THRUST WALL DESIGN FOR 150 PSI MIN. OPERATING PRESSURE.
4. PROVIDE REDUCER OR SOLID SLEEVE, BOTH WITH MEGALUG RESTRAINT, AS REQUIRED TO MATCH EXISTING PIPE CONDITIONS.